

Leslie Park



Activities:

Home Run!

Leslie Park's two baseball fields sit opposite each other. How fast can you dash from one home plate to the other?

How Many Evergreens?

Evergreen trees, also known as conifers, are green all year round. How many evergreens can you find in Leslie Park? Can you determine their species?

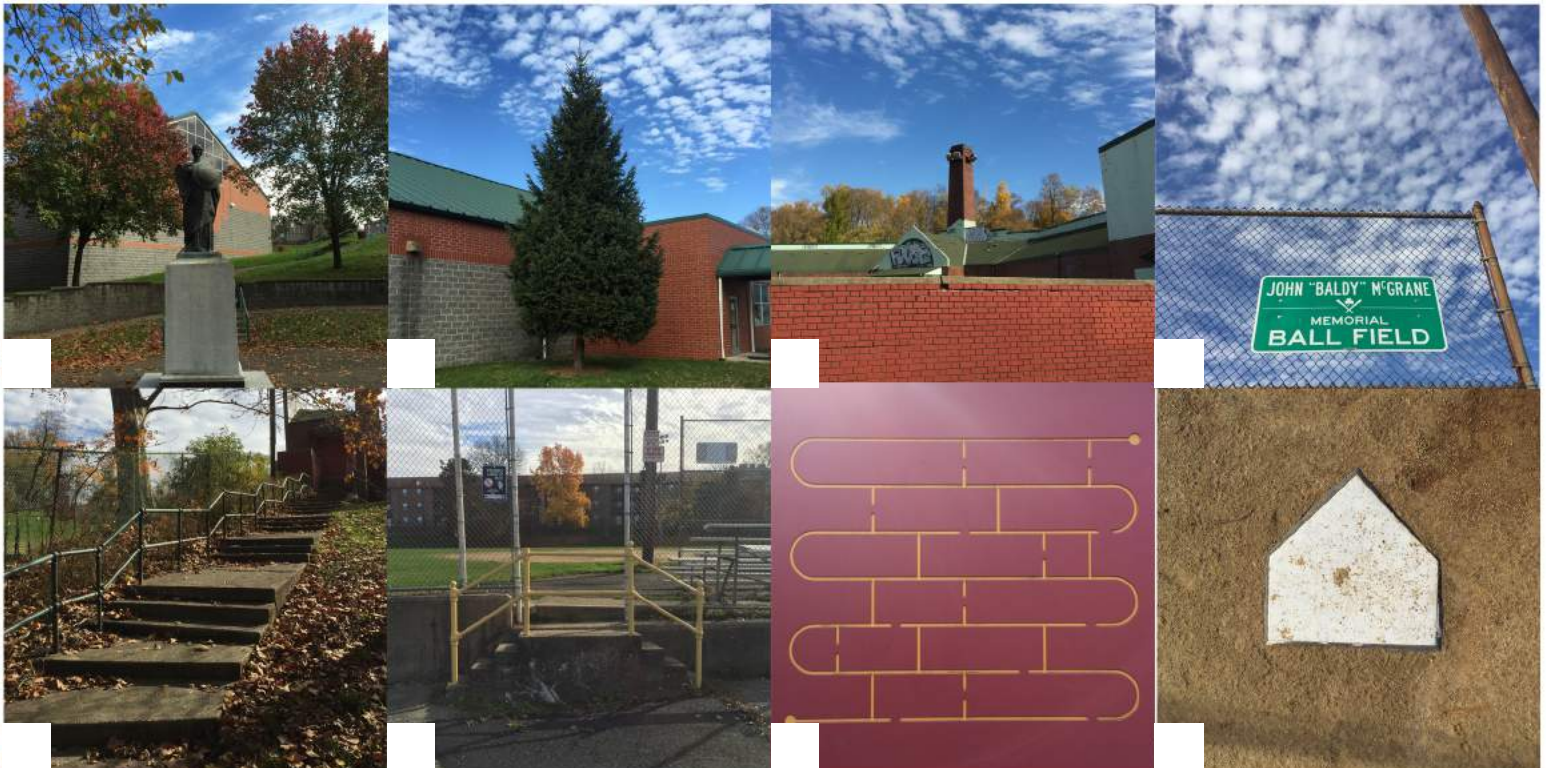
Unbeleafable!

Collect as many different leaves as you can. Challenge a friend, and see who finds the most!

Count the Stairs!

There are a bunch of stairs in Leslie Park, but do you know how many? Walk them and keep count to find out!

Scavenger Hunt:



Leslie Park



Address

At the corner of Butler St. and
46th St.
Pittsburgh, Pennsylvania 15201



Hours

Mon-Sun: 6:00 am - 11:00 pm

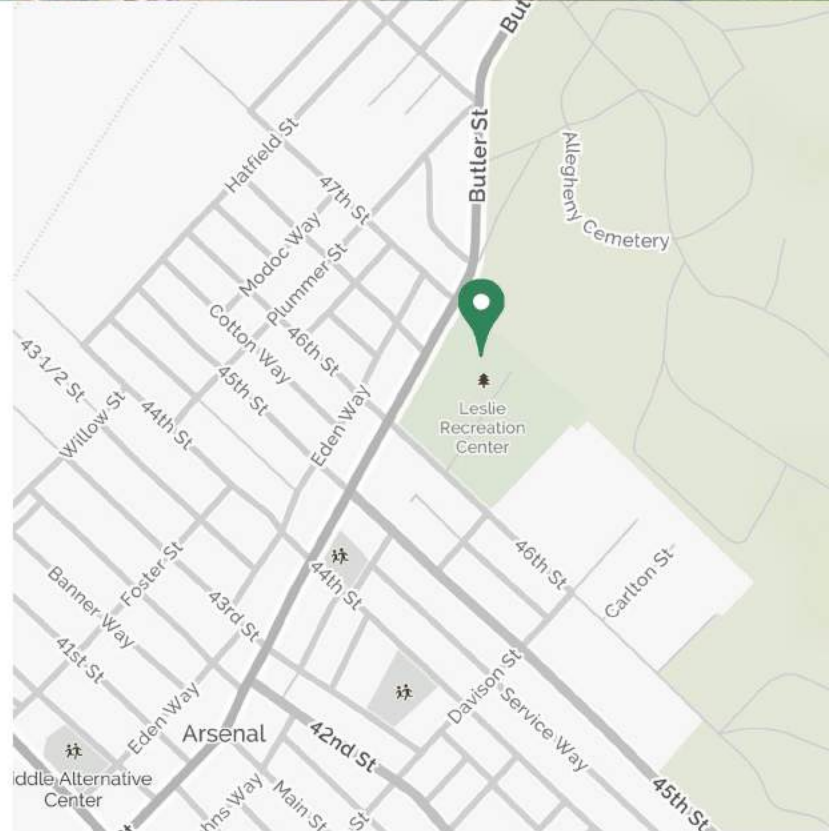


Directions

Buses:
91; 93
With stops at Butler and 46th, 47th



Bonus Points: Bike or hike to the park!



History

Leslie Park has served as a neighborhood park within Lawrenceville for the last century. Located at the corner of Butler Street and 46th Street, and adjacent to the Allegheny Cemetery, the park is positioned to embrace its future revitalization as a neighborhood recreation and open space resource. There is a desire for the park to continue to foster health and wellness for the neighborhood, serve as an ecological resource, and provide a setting for social interaction.

Facilities:



Other Resources

Friends of Arsenal Park:
[https://www.facebook.com/
ArsenalParkPGH](https://www.facebook.com/ArsenalParkPGH)

Citiparks: <http://pittsburghpa.gov/citiparks/>

For more parks and activities, visit Pittsburghparks.org/rx